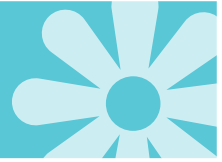


# Posidonia



## MAIN COMPONENTS

**TIRES:** Brand CST 20" x 4.0 model Sport

**MOTOR:** Brushless 250/500 watt Bafang Geared Rear Hub Motor, weight 3.8 kg

**PAS:** With 12 sensors (assisted pedaling sensor as circulation code)

**BATTERY:** Lithium-ion, 48V SAMSUNG 13ah (624wh), central model, detachable with USB socket and electrical circuit protection

**SPEED:** Max 25 Km / h (European market regulations - EN15194, EN14764)

**AUTONOMY:** 40-80 km depending on road conditions, weight and speed chosen

**LIGHTS:** Led models, the front headlight has a comparable efficiency to the headlights of a car

**MANETS:** Professional eco-leather

**PEDALS:** Sport model

**CHAIN:** KMC brand, antioxidant, silver color

**HANDLEBAR/FORK:** Made of aluminum and designed together with the frame

**STAND:** Positioned at the rear side model, reinforced aluminum

**SEAT:** Extra-long seat made with memory foam technology, for front child transport

**TABLE:** Numbered aluminum alloy

**BRAKES:** Hydraulic disc on the rear and front wheel, brand TEKTRON HD M-285

**LEVEL BRAKES:** Brand TEKTRON with ergonomic grips and motor sensors

**FENDER:** front and rear aluminum

**DISPLAY:** Next-generation intelligent APT LCD model for complete e-bike management

**GEAR TEETH:** 52T, aluminum brand Prowheel

**ELECTRICAL PLUGS ON THE HANDLEBAR:** Waterproof, fast for excellent viewing and to place the throttle

**GEAR SET:** Shimano 7 Tourney Shifter

**GPS SYSTEM:** Perfectly hidden inside the frame

**WEIGHT** 23 kg including battery

**MAX LOAD:** 140Kg